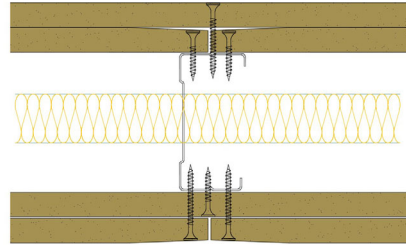


70-B-57(25) - SPEEDLINE System Data Sheet - Version V1 (24-10-23)

SPEEDLINE 70mm 'C' Stud Partition @600mm Ctrs,
with 2x BG Gyproc 12.5mm WallBoard each side,
25mm APR



System Performance Breakdown

Fire Resistance:

BS476 Part 22:1987:

Test Ref & Date or Applied Ref & Report:

Max Height:

Thickness:

Duty Grade: BS 5234: Part 2:1992:

Sound Insulation:

60/60 Minutes (Integrity/Insulation).

BTC 17580F - BRE Report P102396-1011A

Refer to Speedline Specification Clause

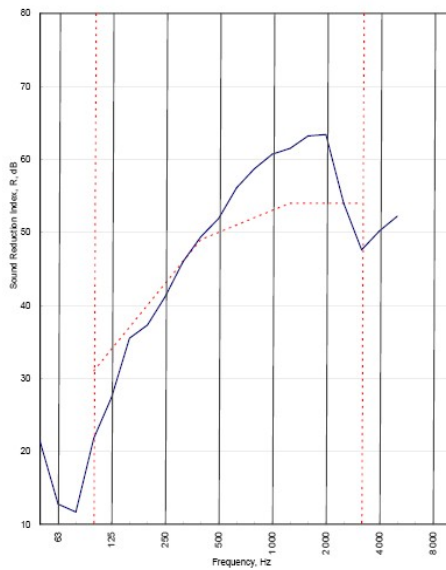
122 mm. (At Base Track, Excluding Finishes)

Severe - Annexes A-F

50 R_w dB, Date Tested or Assessed Against - 14/07/2011

Test Code:	H17485AA
Test Date:	14/07/2011

Freq. Hz	R dB
50	21.3
63	12.8
80	11.7
100	21.8
125	27.4
160	35.5
200	37.3
250	41.2
315	46.0
400	49.4
500	51.9
630	56.1
800	58.7
1 000	60.7
1 250	61.5
1 600	63.2
2 000	63.4
2 500	54.0
3 150	47.6
4 000	50.2
5 000	52.2
6 300	
8 000	
10 000	



Rating according to BS EN ISO 717-1:1997			
$R_w (C;Ctr) = 50 (-3;-10) \text{ dB}$			
Max dev. 9.2 dB at 100 Hz			
$C_{50-3150}$	$C_{50-5000}$	$C_{100-5000}$	
-8 dB	-8 dB	-3 dB	
$C_{2-50-3150}$	$C_{2-50-5000}$	$C_{2-100-5000}$	
-20 dB	-20 dB	-10 dB	

TESTED AT ONE OF THE UKAS ACCREDITED LABORATORIES BELOW

B.T.C (H-Ref on Graph)

B.R.E

AIRO

S.R.L

Customer: Metsec plc Hepsec Division



BTC 17485A: Page 9 of 11

SPEEDLINE Drywall Systems, Adsetts House, 16 Europa View, Sheffield Business Park, Sheffield, S9 1XH.

Tel: 0114 231 8030.

Email: enquiries@speedlinedrywall.co.uk

(As per the requirements set out in ISO/IEC 17025:2017 regarding test data the results stated have been carried out by voestalpine Metsec plc as part of the contract to supply Speedline Metal Sections to SIG Plc)